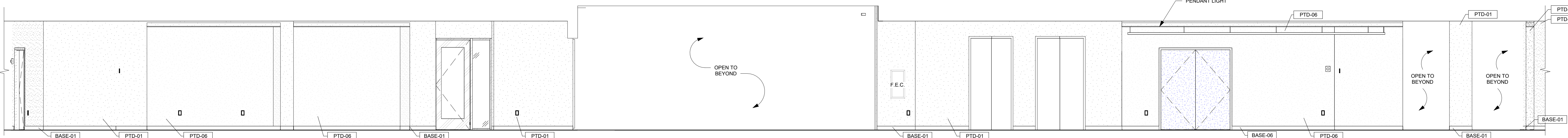
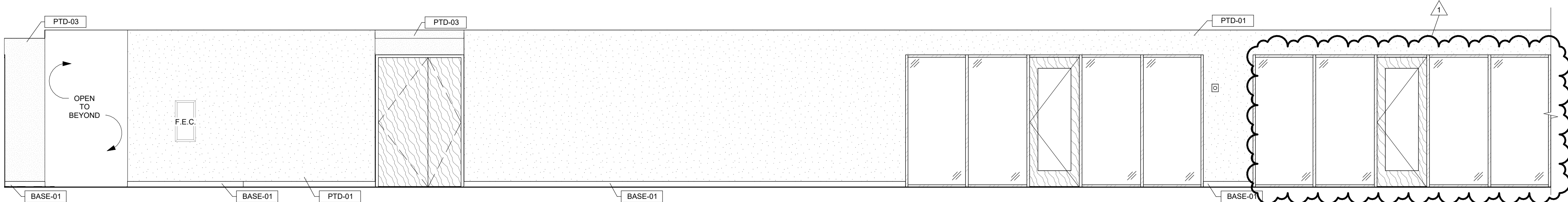


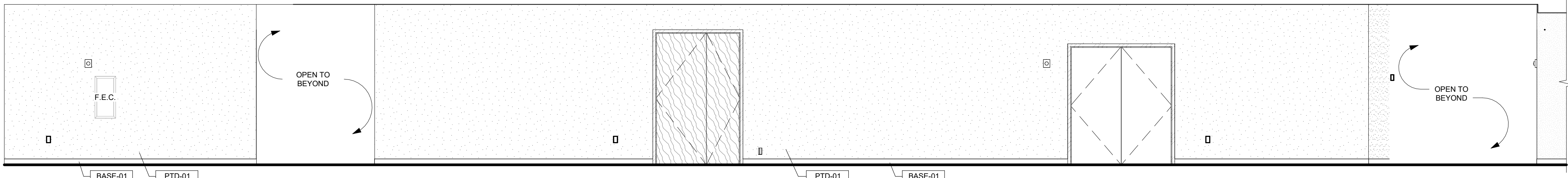
4 C205 CORRIDOR SOUTH  
1/4" = 1'-0" | RE: 1/A102



3 C205 CORRIDOR NORTH  
1/4" = 1'-0" | RE: 1/A102



2 C208 CORRIDOR WEST  
1/4" = 1'-0" | RE: 1/A102



1 C208 CORRIDOR EAST  
1/4" = 1'-0" | RE: 1/A102